

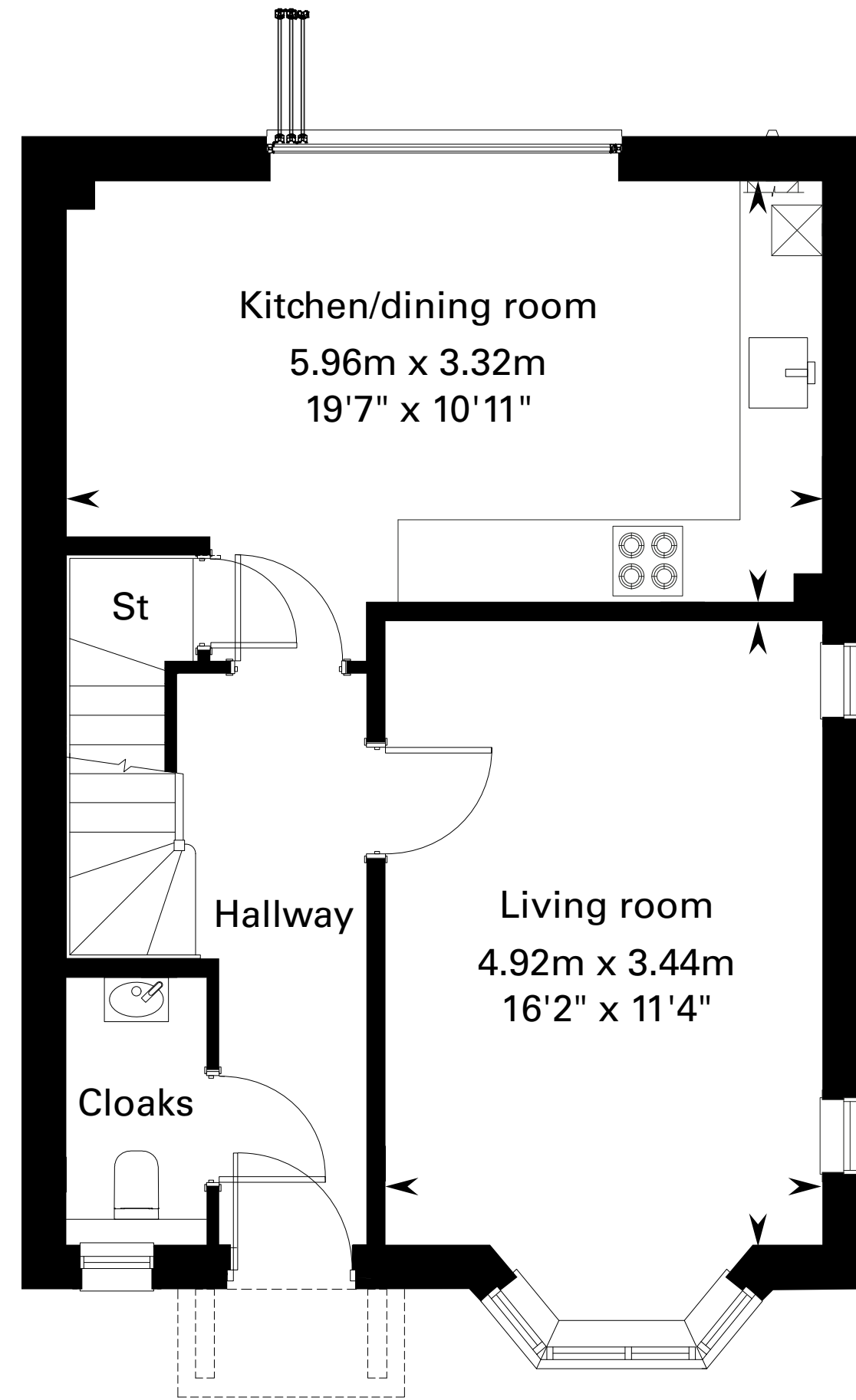
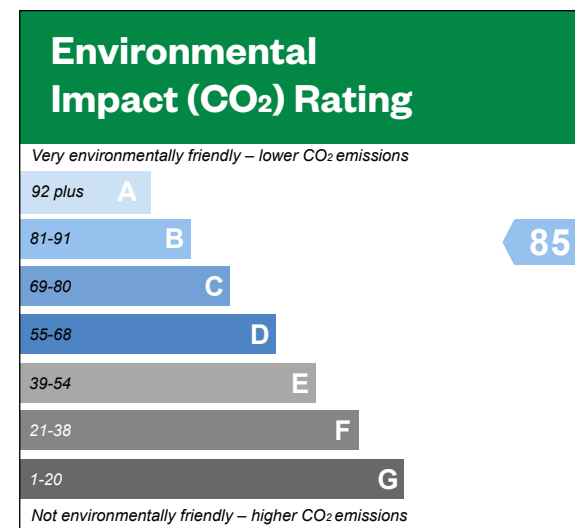
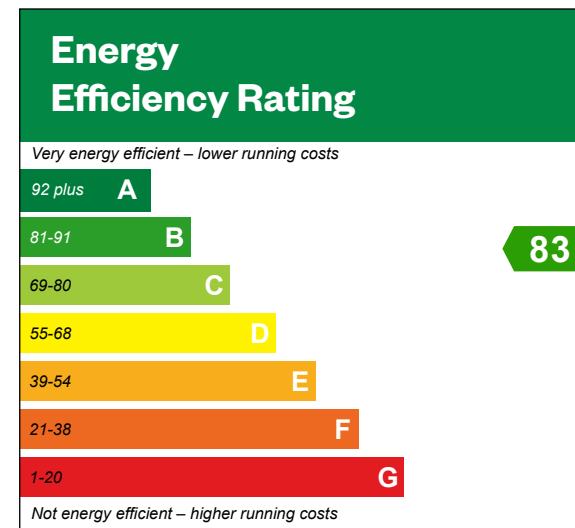


The Drayton

3 bedroom detached and link-detached home

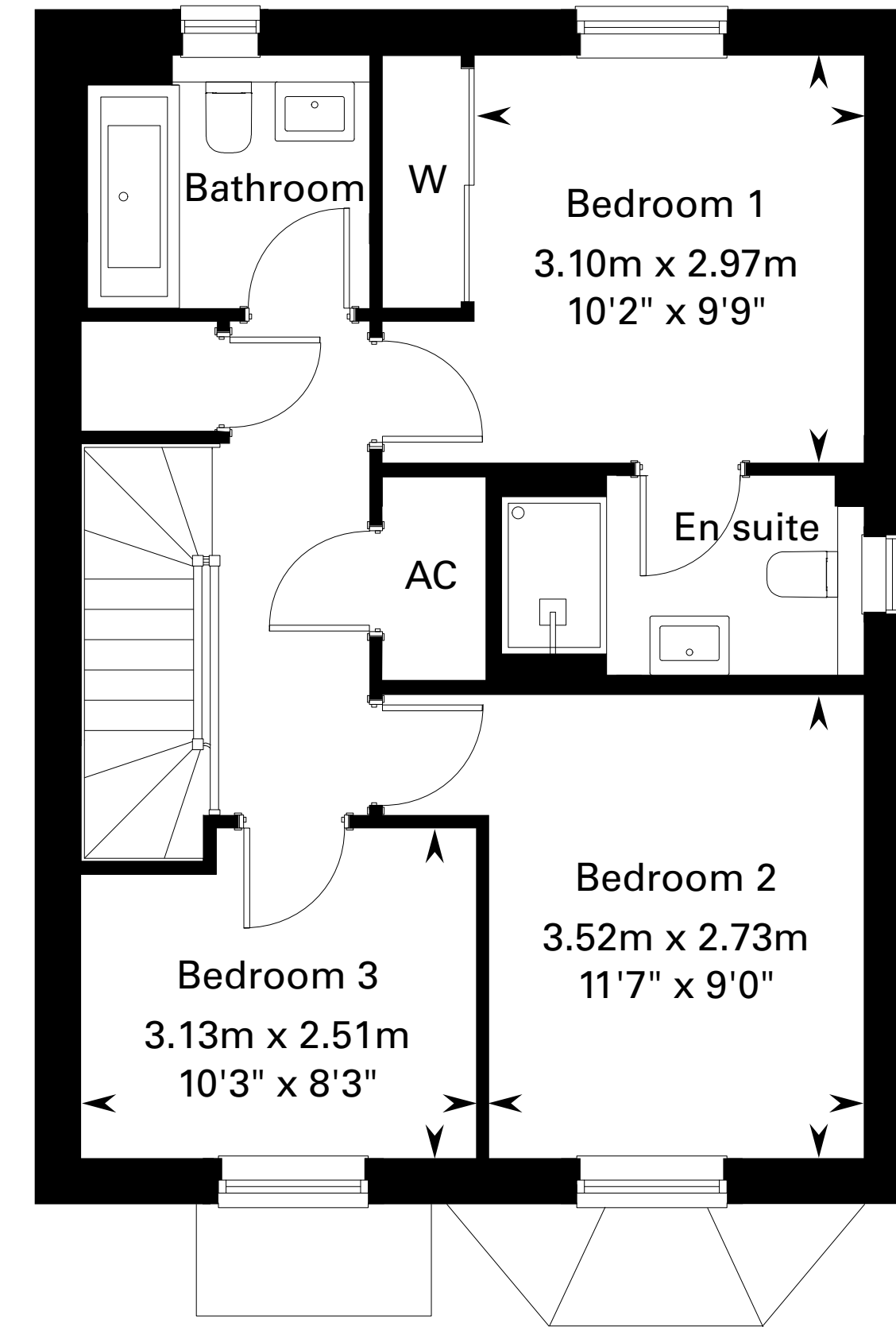
The Drayton

Plots 440*, 447*, 449 & 451 – as shown
 Plots 387, 438, 446 & 448* – handed



Ground floor

Window to plots 387 & 451



First floor

*Plots 440, 447 & 448 are link-detached homes. Please ask your Sales Consultant for further details. AC: Airing cupboard. St: Store cupboard. W: Wardrobe.

The Consumer Protection from Unfair Trading Regulations 2008. Legal & General operates a policy of continual product development and the specifications outlined in this brochure are indicative only. The computer generated images and photographs do not necessarily represent the actual finishings/elevation or treatments, landscaping, furnishings and fittings at this development. Information contained is accurate at date of publication on 16.05.2023. See the main brochure for the full Consumer Protection statement. This is a Predicted Energy Assessment for properties that are incomplete. Once the property is completed, this rating will be updated and an official Energy Performance Certificate will be created for the property.