

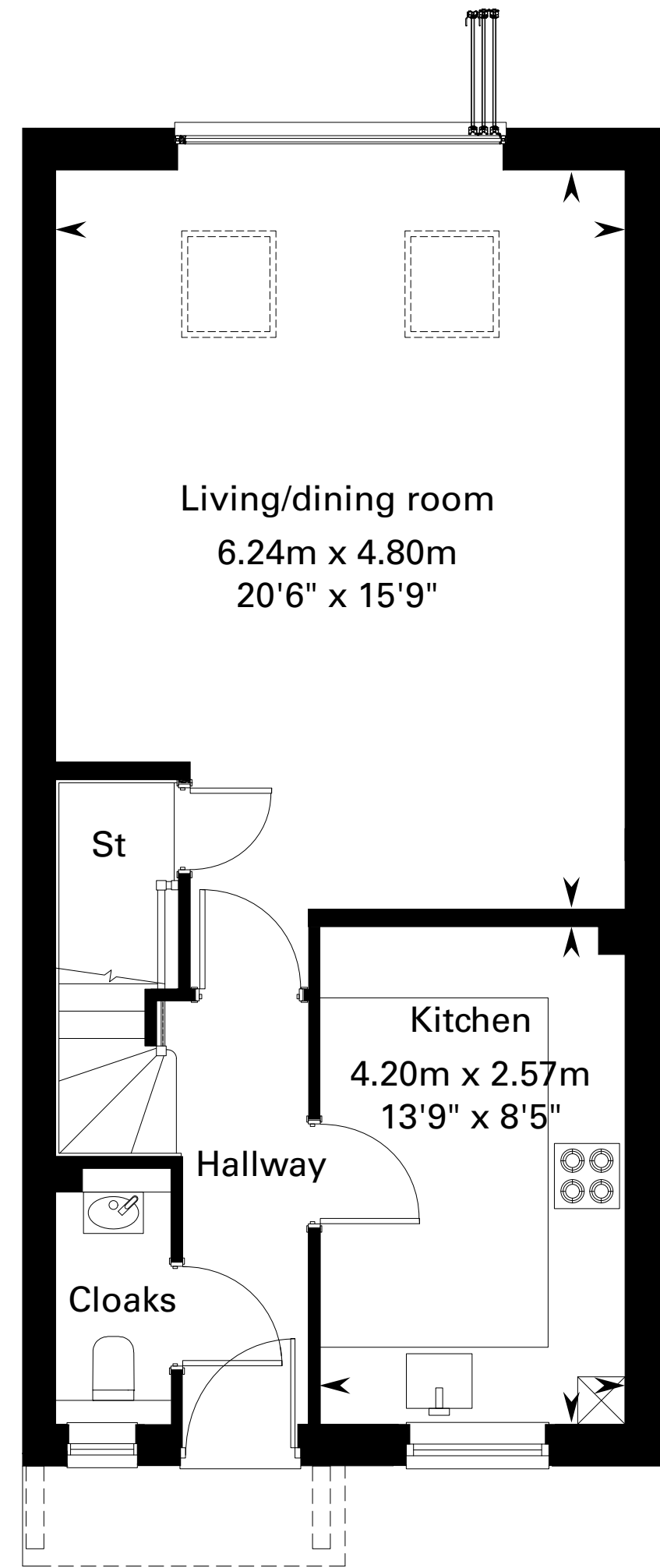
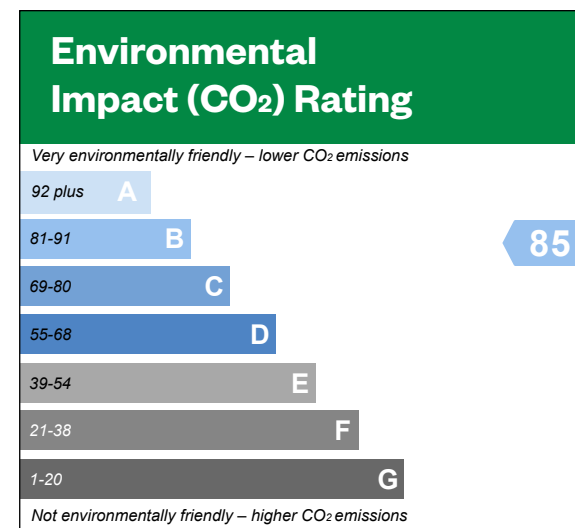
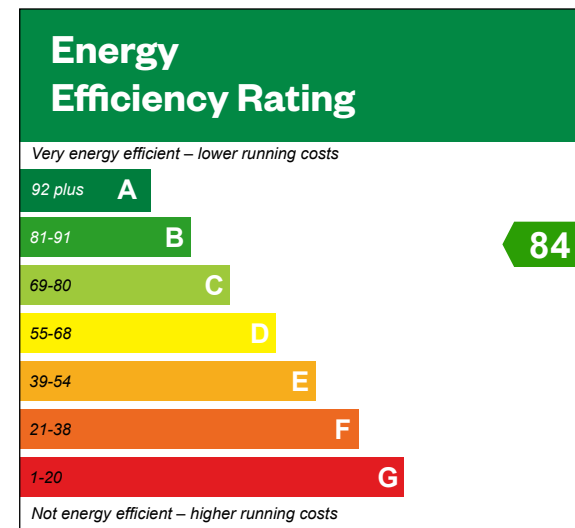


The Ashford

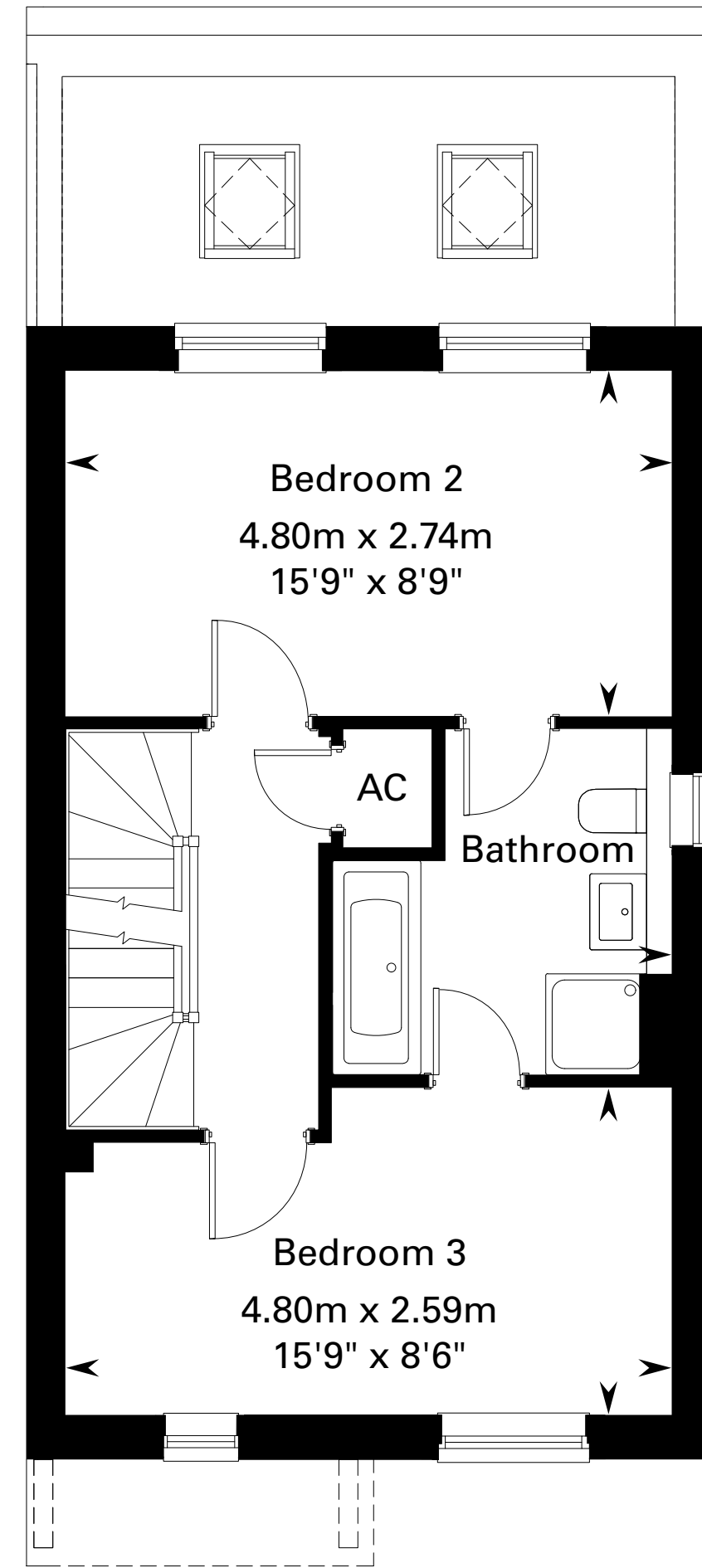
3 bedroom semi-detached home

The Ashford

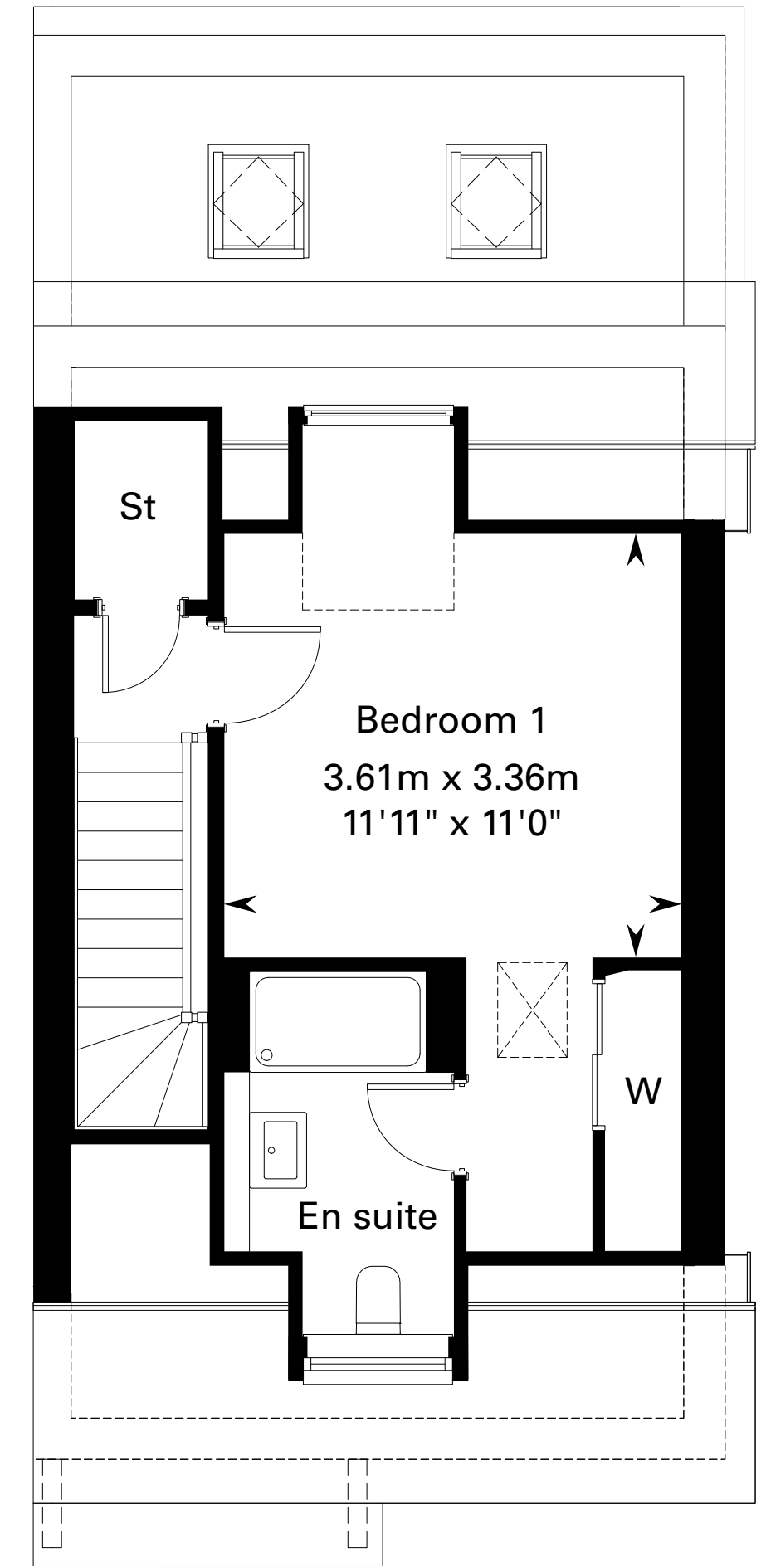
Plots 385, 411, 413, 455 & 457 – as shown
 Plots 386, 412, 414, 454 & 456 – handed



Ground floor



First floor



Second floor

Please ask your Sales Consultant for further details. AC: Airing cupboard. St: Store cupboard. W: Wardrobe.

The Consumer Protection from Unfair Trading Regulations 2008. Legal & General operates a policy of continual product development and the specifications outlined in this brochure are indicative only. The computer generated images and photographs do not necessarily represent the actual finishings/elevation or treatments, landscaping, furnishings and fittings at this development. Information contained is accurate at date of publication on 16.05.2023. See the main brochure for the full Consumer Protection statement. This is a Predicted Energy Assessment for properties that are incomplete. Once the property is completed, this rating will be updated and an official Energy Performance Certificate will be created for the property.